



PORTFOLIO |

2020 |



AUTOTIMELAPSE.COM

ABOUT US

Auto Timelapse was founded in August 2017 with the accompaniment of the Institute for space and underwater technology - Hanoi University of Science and Technology. With the responsibility to research, develop and apply the most modern technology to various fields of life, Auto Timelapse has gradually affirmed its highly practical values and gained trust from and been used by multiple partners. Especially, ATL device to supervise construction progress has been present in all cities and provinces nationwide, and initially been deployed in other countries in the Southeast Asia area. After many years of product research and development, Auto Timelapse has created a great deal of new solutions with highly practical values namely High-tech agriculture, Environment, Security Supervision, Experience tourism, etc. These solutions have brought about advanced automation, labour cost reduction, enhancing working efficiency, saving time and money for partners.



SMART TECHNOLOGY FOR BETTER LIFE

We provide the solution for smart progress management and automatic creation of high-quality timelapse film for multiple fields including construction, agriculture, tourism and security. With the purpose of enhancing the precision, transparency, credibility and efficiency of information, Auto-timelapse has increasingly affirmed its practical values in different areas of life.



AUTOTIMELAPSE CONSTRUCTION

ATL-C is a Solution Suite for smart monitoring the construction progress. Provide photos of real construction 24/24, helping to track the progress of the project online everytime, everywhere. Automatically synchronizing and reporting the construction progress throughout the project implementation process. ATL-C is a versatile assistant that helps investors accompany contractors to objectively assess project performance with customers and partners. ATL-C features an automatic timelapse 4k video function, creating a free-of-charge media product.

TRACKING THE PROGRESS OF CONSTRUCTION WORKS

- Automatically capture, update works images online in many angles
- Create construction progress videos as required
- Analyze and convert image data into a report chart
- Integrated display of data on multiple device platforms

MANAGE PROJECT DATA STORAGE

- Store all construction images from beginning to completion
- Store data on the system permanently
- Limited number of management account, absolute assurance of project data security.
- Support converting, downloading project data



VIDEO TIMELAPSE

- Showing an overview, vividly about the stature and development of every project
- Increase credibility of position and capacity with partners and customers
- Video comparing progress between months, demonstrating construction capacity of contractors with investors as well as between investors and buyers

INVESTIGATION AND INSTALLING EQUIPMENT

- Professional and enthusiastic investigation and Installation team
- Free advice on the optimal options according to the requirements and project characteristics
- High-tech equipment, with great durability, security, utilizing flexible energy that is environmentally friendly
- Simple installation and quick dismantling without affecting the project.

AUTOTIMELAPSE HIGH-TECH AGRICULTURE

ATL-A is a smart agricultural management solution Suite that not only reports the image of the farming process, but also displays and analyzes the growth indicators of plants and animals as well as notifies changes of environment. Farmers and traders can reliably manage their products from anywhere. ALT-A also features traceability of products, building trust in the hearts of consumers.



SCAN CODE TO TRACE THE PRODUCT ORIGIN

ATL Solution Suite provides automatic QR code corresponding to each product. Shoppers can easily scan codes to trace product origin and watch actual farming timelapse videos. This is the objective information for consumers to fully trust when choosing high-tech agricultural products.

- Automatically print QR codes corresponding to each product, ensuring transparent production process
- QR code is easy to scan with smartphone, there is no need to install software
- Scan QR code to watch brief timelapse videos of the process of growth and production of products



SENSOR SYSTEM

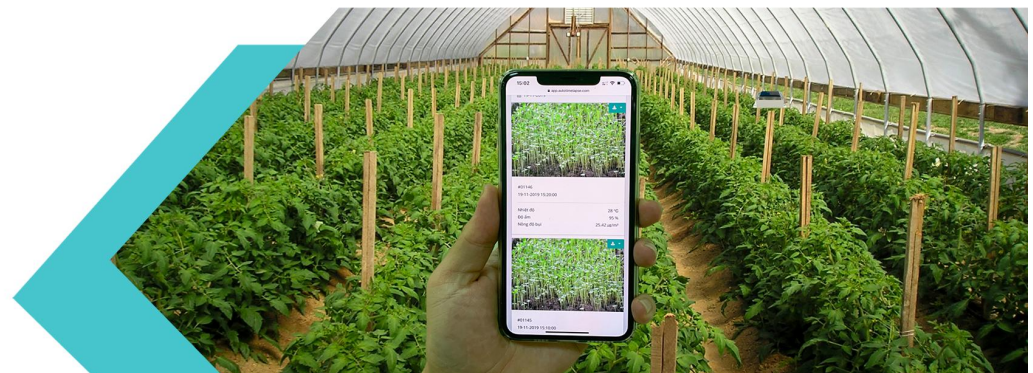
ATL integrates a high-tech sensor system for direct monitoring and regular reporting of plant and animal growth. Accurate parameters of ATL helps users set up scientific cultivation process, yielding high productivity.

- Air temperature, soil temperature sensor
- Air humidity, soil moisture sensor
- Soil ion (soil EC) sensor , soil PH level sensor
- Temperature, pH of irrigation water
- Sensors for concentration of gases Co₂, O₂ that affects the growth of plants
- Light intensity measurement system

STORAGE SYSTEM - DATA PROCESSING

Farming data is stored by cropping seasons, creating an analysis platform to improve the process of caring for plants and animals.

- Provide images to monitor plants and animals directly 24/24
- Display actual measurement parameters as required
- Automatically send notifications in case the parameter exceeds the limit
- Convert measurement results into comparison charts between periods and cropping seasons





AUTOTIMELAPSE CLIMATE ENVIRONMENT

ATL-E is a comprehensive environment monitoring solution that automatically collects and displays environmental quality parameter data with actual images. ATL-E provides accurate specifications and objective assessment of the environment. The technology of automatic editing of high-quality timelapse film will give an overview image of the topographic and climate change with accurate data for research.

ENVIRONMENTAL PARAMETERS

ATL-E is an automatic device system that accurately and continuously records the environmental parameters at the locations where the equipment is installed.

- Provide data on temperature, humidity, dust concentration, concentration of gases as required
- Store information permanently, unlimited capacity with cloud storage technology
- Updated data 24/24, suitable for monitoring on many different devices and platforms

ENVIRONMENTAL TIMELAPSE FILM

ATL-E creates vivid and realistic timelapse videos with smart auto-editing feature. Save the unexpected changing moments of the ecosystem, natural environment.

- Flexible installation, suitable for all terrains and climates
- High quality images clearly show the weathering, erosion, etc. process
- Automatic video compositing according to selected time
- Combined display of physical parameters of the environment



SMART TECHNOLOGY PRODUCTS

ATL-E is formed on the basis of modern technology, high-speed online information transmission system, unlimited storage capacity, allowing accurate environmental monitoring, rapid online reporting.

- Sensor system with high accuracy
- Ability to connect and compare data with available devices, helping to save initial investment costs
- Hardware system is highly optimized, supporting in compact design of devices, saving installation and operation costs
- Does not require human intervention during equipment operation process.
- Support the use of renewable green energy.

AUTOTIMELAPSE TRAVEL EXPERIENCE

ATL-T is an online experience application prior to your travel, a friendly "guide" that brings you from the latest image of a tourist attraction to the great moments of that place over the past. A brief but complete and vivid timelapse movie about the modern hustle of a city or the changing nature of the seasons.



TRAVEL THROUGH TIMELAPSE MOVIES

- Experience the nature, indigenous people and the best moments of a tourist destination through a brief film
- Expanding and promoting tourist destinations
- Easily observing the changes over time of the resort and its surroundings



TRAVEL THROUGH 360 VIRTUAL REALITY TECHNOLOGY

- 360-degree shooting technology shows the panoramic view of the resort.
- Direct interaction with the image creates realistic feelings as if you are really in a tourist destination.
- Displaying the model of a completed project, inspiring viewers to travel and experience.





AUTOTIMELAPSE SECURITY MONITORING

ATL-S is an smart monitoring system, integrating specialized sensors and analytics software with high flexibility and accuracy. ATL-S provides clear images and instant alerts to ensure the professionalism and highest efficiency of the security supervision. The surveillance images are transmitted and analyzed in an automated system, ensuring absolute information security for users.

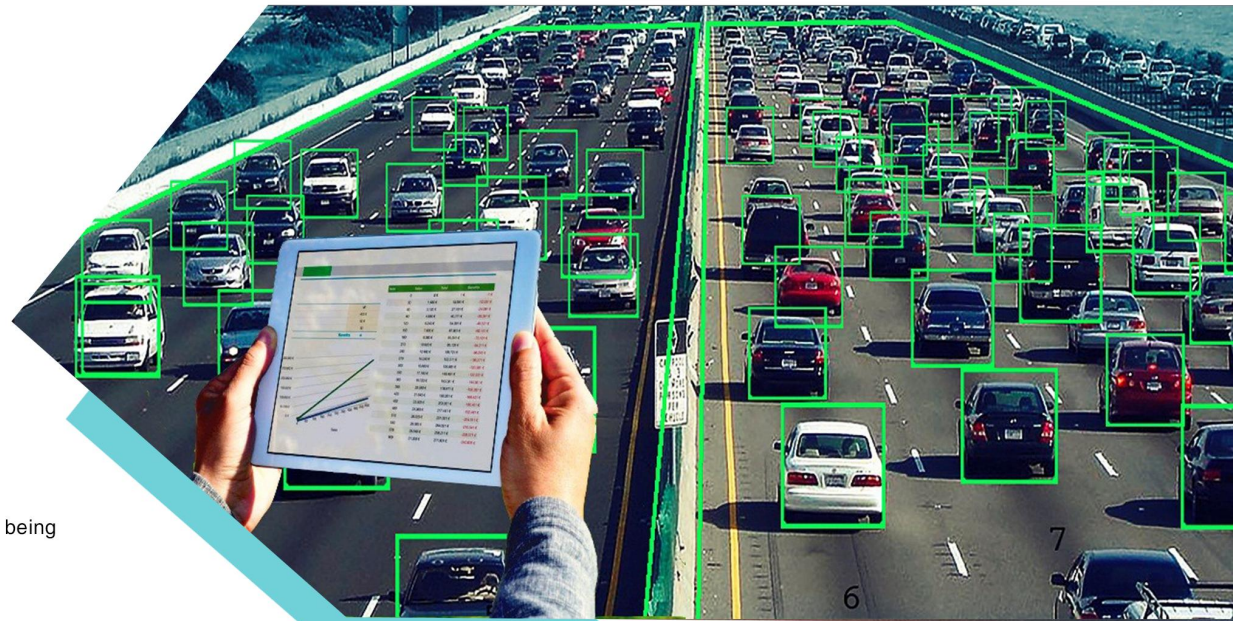
HIGH-TECH CAMERA SYSTEM

High-tech ATL-S security cameras ensure basic functions such as online monitoring, image storage, along with many more smart and modern features that brings unexpected efficiency.

- Camera with Full HD resolution can zoom far and shoot at night with clarity
- Accurate identification function, based on diverse objects including: human face, number plate characters, vehicles, motion detection ...
- Sturdy design, resistant to all weather conditions
- Easy to install, maintain, and being integrated to use green energy sources.

VEHICLE TRACKING SYSTEM

- Notification of car journey: Coordinates, speed, distance traveled
- Smart sensors detect and warn of violations that have been defined such as boxes being collided, stopping vehicles over the prescribed time ...
- Dedicated camera automatically identifies and captures images of violations.



AUTOMATIC WEIGHING STATION MANAGEMENT SYSTEM

ATL-S is an smartweighing station management system with automatic connection procedure and data receiving and analytics process, ensuring transparency and elevated security. ATL-S integrates cloud storage technology, supports aggregation, monitoring and quick access to data on computers and smartphones.

- Camera identification and specialized sensor weighing stations
- Automatic data reception, without human intervention
- Give warning of wrong process or violations in weighing procedure
- Continuous comparison of automatic weighing results with that of the weighing staff to output the announcement on the system

PARTNERS



CONTACT

VHV Hitech Stock Company

📍 2nd Floor - C8 Building - Hanoi
University of Science and Technology

☎ 0917111392 - 0869191996

🌐 Autotimelapse.com

✉ Autotimelapsevn@gmail.com

